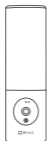


Package Contents



Camera (x1)



Drill Template (x1)

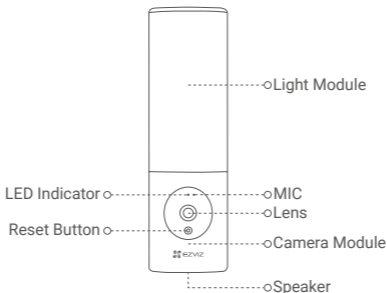


Screw Kit (x1)



Quick Start Guide (x1)

Basics

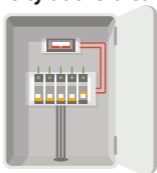


Name	Description
LED Indicator	<ul style="list-style-type: none">• Solid Red: Camera starting up.• Slow-flashing Red: Wi-Fi connection failed.• Fast-flashing Red: Camera exception (e.g. memory card error).• Solid Blue: Video being live viewed in the EZVIZ app.• Slow-flashing Blue: Camera running properly.• Fast-flashing Blue: Camera ready for Wi-Fi connection.
Lens	The lens can be adjusted 15 degrees downwards.
Camera Module	The camera module can be rotated 10 degrees left and right.
Reset Button	Hold for 4 seconds to restart and reset all parameters to default.

Installation

- Recommended installation height: 6-7 ft (1.8-2.2 m) above the ground.
- The camera has a built-in memory card for video storage. There is no need to install an additional SD card.

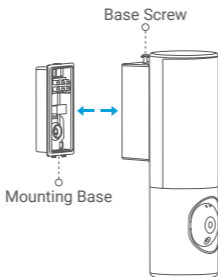
1. Shut off the electricity at the breaker.



- If you don't know where your breaker is or how to turn off power, please consult with a licensed electrician.
- Keep the breaker off at any time during the installation process.

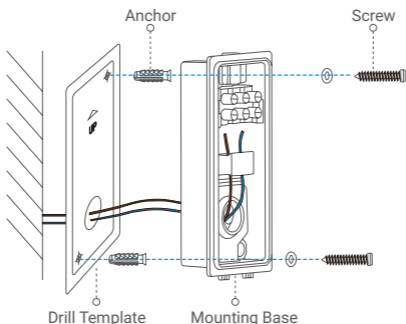
2. Separate the mounting base from camera.

Unscrew the base screw using screwdriver (not included in the package) and pull the mounting base off the camera.



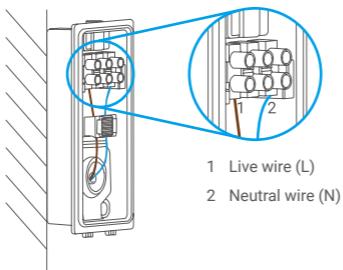
3. Install the mounting base.

- Place drill template onto the surface you have chosen to mount the base.
- (For cement wall only) Drill screw holes according to the template and insert anchors.
- Take the wires from the wall through the drill template and the rubber of the mounting base.
- Use screws to fix the mounting base.



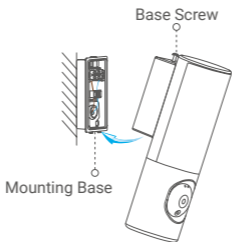
4. Connect the wires.

- Connect the Neutral wire (N) and Live wire (L) one by one.
- Secure them using screwdriver.



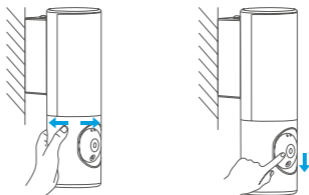
5. Insert the camera to the mounting base.

- Buckle the bottom of the mounting base into the camera.
- Press the mounting base and camera together.
- Tighten the base screw located on the top of the camera.

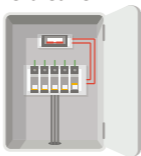


6. Adjust camera module's angle.

You can adjust the horizontal and vertical angle of the camera module as needed.

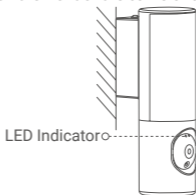


7. Restore power at the breaker.



8. Confirm the camera has power.

After restoring power, the camera will be ready for setup when the light is on and the LED Indicator on the front of the camera fast flashes blue.



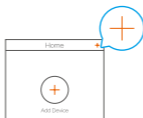
Setup

1. Get the EZVIZ app

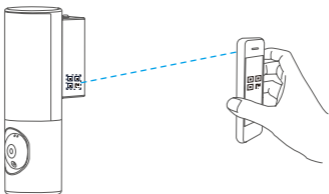
- Connect your mobile phone to Wi-Fi.
- Download and install the EZVIZ app by searching "EZVIZ" in the App Store or Google Play Store™.
- Launch the app and register an EZVIZ user account.


2. Add camera to EZVIZ

- Log in to your account using the EZVIZ app.
On the Home screen, tap "+" on the upper-right corner to go to the Scan QR Code interface.



- Scan the QR code on the Quick Start Guide cover or on the body of the camera.




- Follow the EZVIZ app wizard to finish Wi-Fi configuration.
 -  If you want to change your camera's Wi-Fi, press and hold the reset button for 4s and repeat the steps above.

EXPOSURE TO RADIOFREQUENCY RF

The frequency bands and the nominal limits of transmitted power (radiated and/or conducted) applicable to this radio device are the following:

Band	Wi-Fi 2.4 GHz
Frequency	From 2.4 GHz to 2.4835 GHz
Power transmission (EIRP)	100 mW

-  For detailed information, please refer to www.ezviz.com.

INFORMATION FOR PRIVATE HOUSEHOLDS

1. Separate collection of waste equipment: Electrical and electronic equipment that has become waste is referred to as waste equipment. Owners of waste equipment must dispose of it separately from unsorted municipal waste. In particular, waste equipment does not belong in household waste, but in special collection and return systems.
2. Batteries and rechargeable batteries as well as lamps: Owners of waste equipment shall, as a rule, separate waste batteries and rechargeable batteries that are not enclosed in the waste equipment, which can be removed from the waste equipment without being destroyed, from the waste equipment before handing them in at a collection point. This does not apply if waste equipment is prepared for reuse with the participation of a public waste management authority.
3. Options for returning waste equipment: Owners of waste equipment from private households can return it free of charge to the collection points of the public waste management authorities or to the take-back points set up by manufacturers or distributors within the meaning of the Electrical and Electronics Equipment Law. Stores with a sales area of at least 400 m² for electrical and electronic equipment and those grocery stores with a total sales area of at least 800 m² that offer electrical and electronic equipment several times a year or on a permanent basis and make it available in the market are required to take it back. This also applies in the case of distribution using means of distance communication, if the storage and shipping areas for electrical and electronic equipment are at least 400 m² or the total storage and shipping areas are at least 800 m². Distributors shall, in principle, ensure take-back by providing suitable return facilities at a reasonable distance from the respective end user. The possibility of returning waste equipment free of charge exists for distributors who are obliged to take it back, among other things, if a new similar device that essentially fulfills the same functions is delivered to an end user.
4. Privacy Notice: Waste equipment often contains sensitive personal data. This applies in particular to devices of information and telecommunications technology such as computers and smartphones. In your own interest, please note that each end user is responsible for deleting the data on the waste equipment to be disposed of.
5. Meaning of the symbol "crossed-out wheelie bin": The symbol of a crossed-out wheelie bin regularly depicted on electrical and electronic equipment indicates that the respective device is to be collected separately from unsorted municipal waste at the end of its service life.